

LINC.

COMMERCIAL REALTY

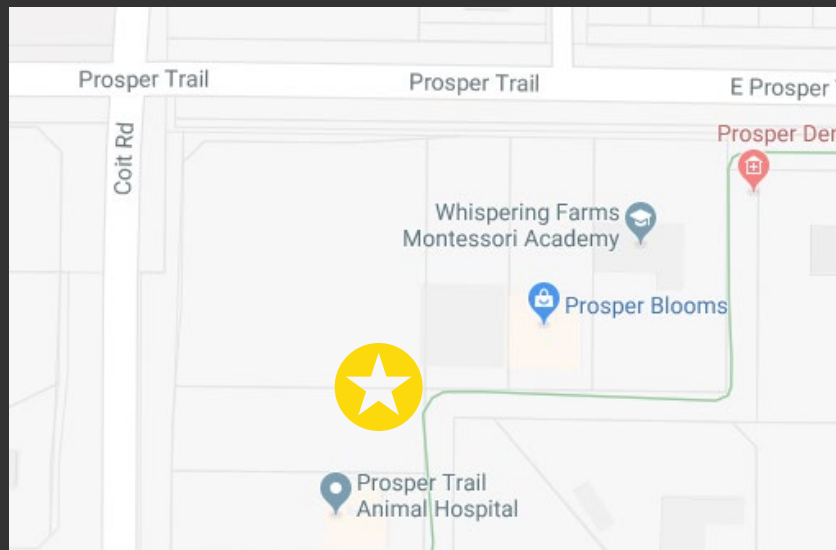


PROSPER TRAIL OFFICE/RETAIL CENTER

1020 S. COIT RD, PROSPER, TX 75078

AVAILABLE FOR LEASE RETAIL CENTER

- BASE RENT: \$29 SF
- NNN
- GROSS LEASABLE AREA: 6,665 SF
- RETAIL / OFFICE SPACE
- BUILD TO SUIT
- TI ALLOWANCE: \$25 SF
- 36 DEDICATED PARKING SPACES
- DIGITAL DEDICATED MONUMENT SIGN IS ALLOWED
- COIT ROAD TO BE WIDENED TO 6 LANES



For more information or to schedule a tour, please contact:

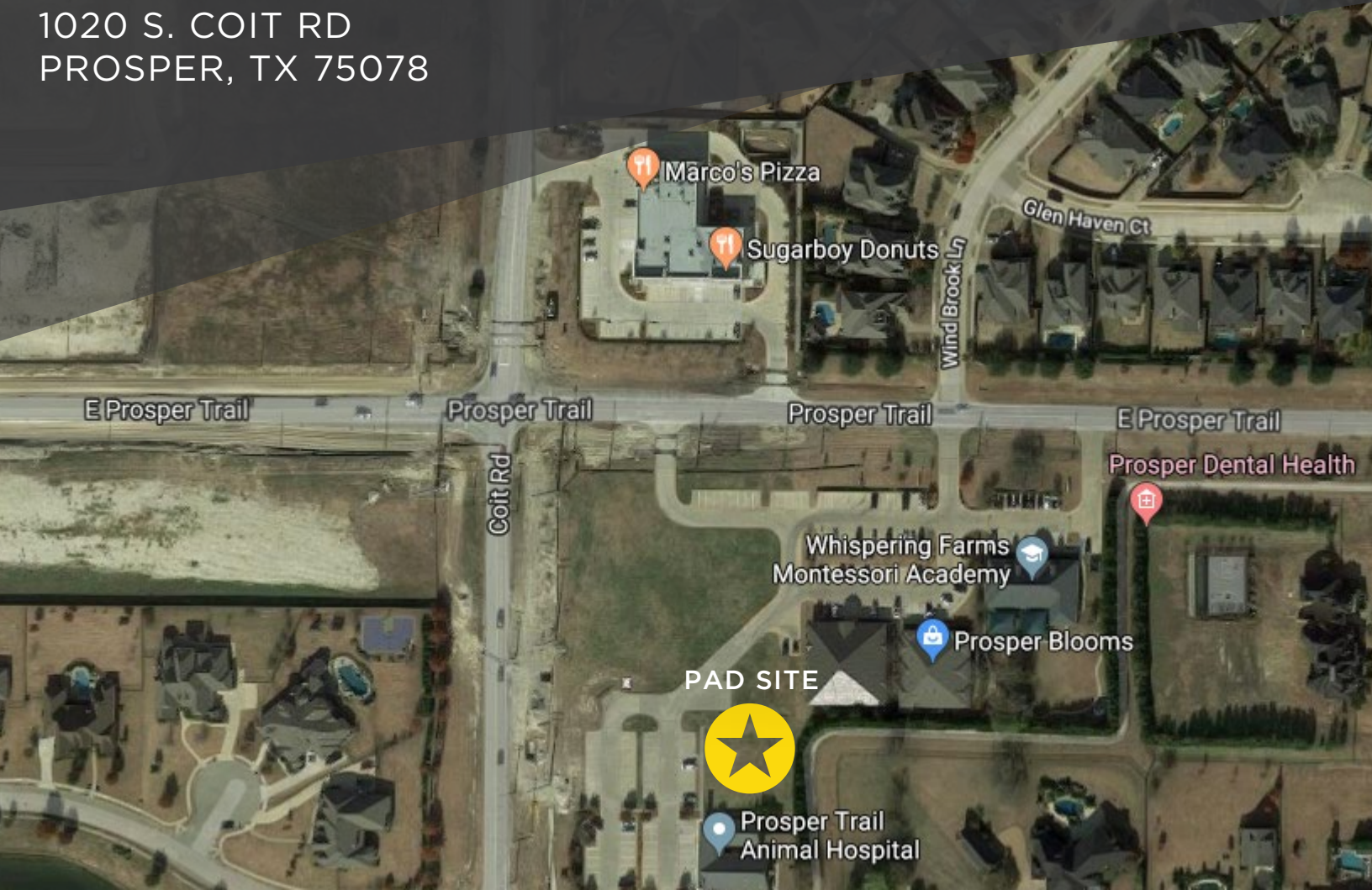
Najdi Rafaty
najdi@linc.realty

O: 214.267.9860
M: 310.735.7980

This information has been obtained from sources believed reliable. We have not verified it and make no guarantee, warranty or representation about it. Any projections, opinions, assumptions or estimates used are for example only and do not represent the current or future performance of the property. You and your advisors should conduct an independent investigation of the property to determine to your own satisfaction the suitability of the property for your needs.

PROSPER TRAIL OFFICE/RETAIL CENTER

1020 S. COIT RD
PROSPER, TX 75078



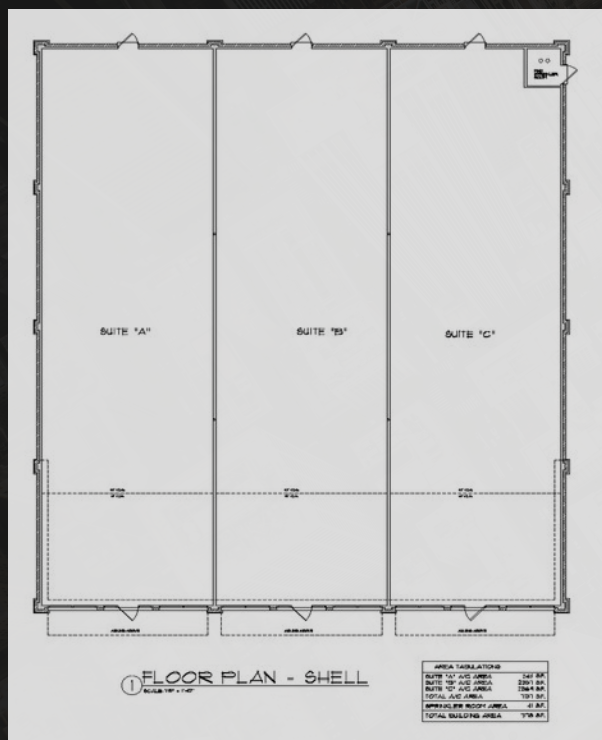
For more information or to schedule a tour,
please contact:

Najdi Rafaty O: 214.267.9860
najdi@linc.realty M: 310.735.7980

LINC.
COMMERCIAL REALTY

PROSPER TRAIL OFFICE/RETAIL CENTER

1020 S. COIT RD
PROSPER, TX 75078



Neighboring business, construction will be similar style.

For more information or to schedule a tour, please contact:

Najdi Rafaty
najdi@linc.realty

O: 214.267.9860
M: 310.735.7980

LINC.
COMMERCIAL REALTY